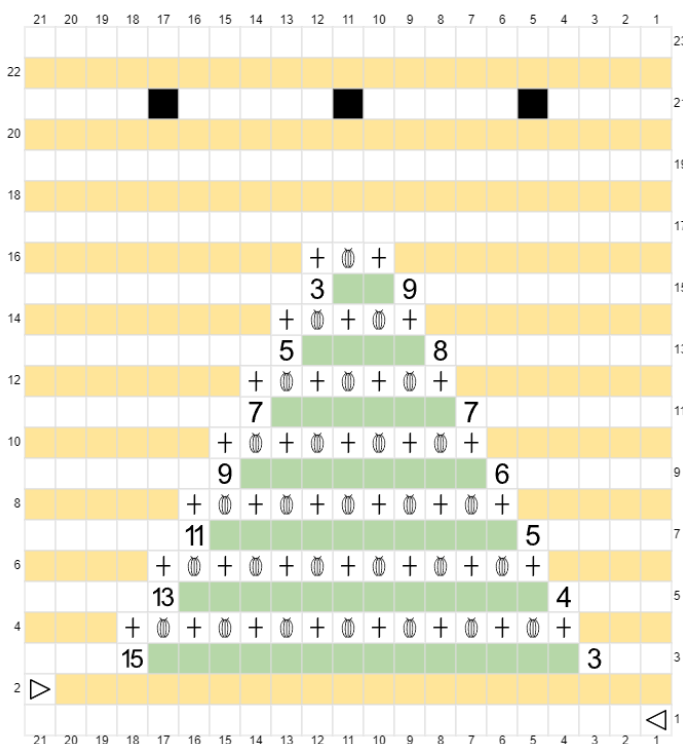


CH 21 +2		BASIC TREE 13cmx18cm
R1-R2	21HDC	CH1 turn (doesn't count as a stitch)
R3	3HDC 15HDC 3 HDC	Colour change on 3 & 15
R4	3HDC 15HDC 3HDC	Colour change on 3 & 15
	Continue pattern	
R18 –R20	21HDC	
R21	CH1 Skp1 at 5, 11, 17	Holes for the drawstring
R22-R23	21HDC	
edge	23sc 21sc 23sc	
a	Invisable seam 3 sides	
b	Spinning SC around top	
c	Thread drawstring	

Stitch Gallery	Code	abbreviations	Materials
Chains	B4	CH	Stylecraft DK Special Khaki Stone Scissors Darning needle 4mm hook
Half Double Crochet	HDC1	HDC DTR(uk)	
Colour Changes	TT1		
Single Crochet	SC1	SC DC(uk)	
Popcorn	SG14	Pop or Pc (DC3)	
Spinning Single	SG13		



CH 21 +2		POPCORN TREE
R1-2	21HDC	CH1 turn (doesn't count as a stitch)
R3 RS	3HDC 15HDC 3 HDC	Colour change on 3 & 15
R4 WS	3HDC 1SC 1PC * 1SC 3HDC	7 popcorn
	Continue pattern	
R17–R20	21HDC	
R21	CH1 Skp1 at 5, 11, 17	Holes for the drawstring
R22-R23	21HDC	
edge	23sc 21sc 23sc	
a	Invisable seam 3 sides	
b	Spinning SC around top	
c	Thread drawstring	