

Heather's Baby Grab Bag**Materials**

Outer Fabric - ½ metre quilting cotton,

Lining Fabric – ½ metre quilting cotton.

Decovil Light – ½ metre

Medium Weight Interfacing – ½ metre

Polypropylene Webbing 1 inch width x 24 inches.

Matching thread

1 inch D ring x 1 or 2 for 2 strap connectors

1 inch Swivel Clip (lobster claw)

Magnetic clasp x 2 of 14mm or 1 of 18mm

Size 90/jeans sewing machine needle

SEAM ALLOWANCE is half an inch unless stated otherwise.

CUTTING GUIDE

		Med Interfacing	Outer Fabric	Lining Fabric	Vinyl	Decovil	
Front	10 x 8	x1	x1	x1		1 of 9 x 7	
Back	10 x 8	x1	x1	x1		1 of 9 x 7	
Sides	3 x 8	x2	x2	x2		2 of 2 x 7	
Bottom	10 x 3	x1	x1	x1		1 of 9 x 2	
Flap	9.5 x 11	x1	x1	x1		1 of 8 1/2 x 9 3/4	
Slip Pocket	10 x 6	x1	x1	x1			
Binding	10 x 2	x0	x1	x0			
Vinyl Pocket	10 x 6	x0	x0	x0	x1		
Strap Webbing	1 of 16"						
	1 or 2 of 4"						

TOOLS

Marking Tool (ie frixion pen) or chalk pencil

Ruler

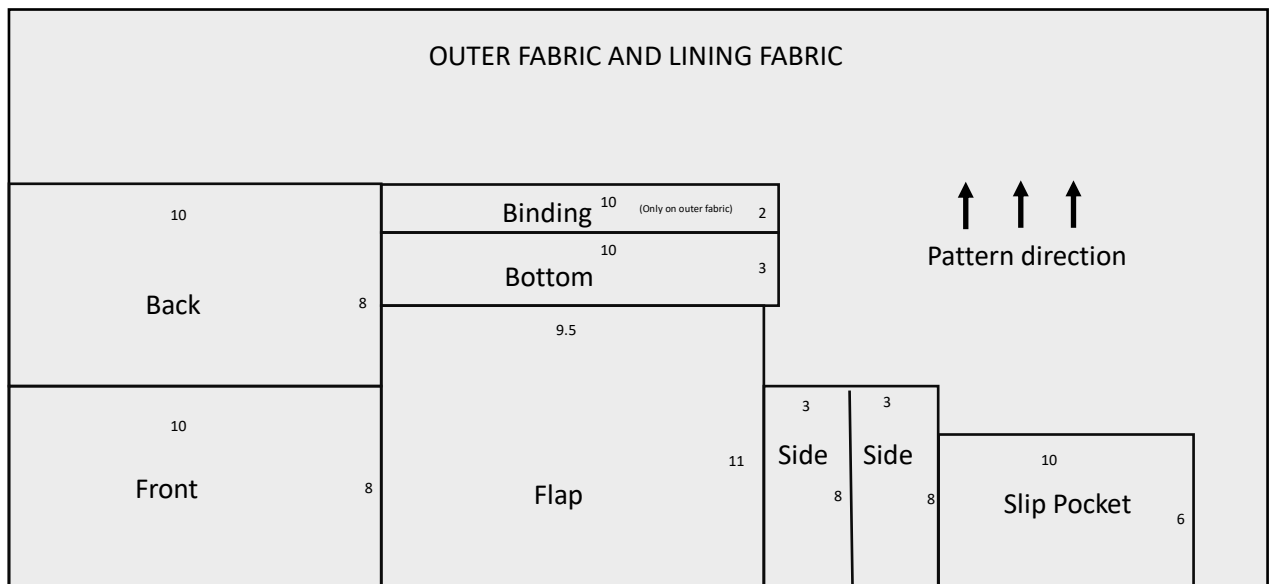
Fray Check

Point turner

Scissors and snips

Seam Ripper

Pins and wonder clips



1. Cut and interface your fabrics. Use the medium weight interfacing on the lining fabrics.
2. Use the Decovil light on the outer fabrics, making sure it is lined up $\frac{1}{2}$ inch in from the edges so that it is not in your seam allowance. On the flap the decovil is $\frac{3}{4}$ inch down from the top edge and $\frac{1}{2}$ inch in from the other 3 sides.
3. Draw $\frac{1}{2}$ seam allowances on everything except the slip pocket pieces the vinyl and the top edges of the flap pieces.
4. Mark the centres of all the edges on all the pieces including the vinyl. You don't need to mark the centers of the sides on the pocket pieces.
5. Make binding. The fabric will be wrong side up on your table. Fold the long edges to meet each other and press. Open out then fold the long edges to the centre fold leaving a slight gap so it folds better. Keep folded then fold the the two folded edges to meet and then press. Set aside until later.
6. Make strap connectors by sliding onto a D ring and then basting or gluing the edges together. Sew under the D ring to stop it sliding around. Set aside until later.
7. Make strap by sliding the strap onto the swivel clip, overlapping the two ends by about 1.5 inches, at the end with the swivel clip and sew in place through all the layers. Set aside until later.
8. Add the female part of the magnetic fastener(s) to the outer front panel, 2 inches up and centred from the bottom edge (or 2 inches in from each side for 2 fastners). Mark placement through the washer and then cut the marks with a seam ripper. Add fabri – tac to the holes to stop fraying and then push the prongs of the fastener through the holes. Add extra pieces of stabiliser over the back of the prongs then add the washer and then press the prongs to the outside not the inside. Set aside until later.
9. Add the male part of the fastener to the bottom edge of the flap lining fabric as above but this time 1.5 inches up from the edge and centred or (1.75 inches in from each side for two fastners).
10. Sew flap pieces right sides together around 3 sides, trim the corners, turn through, press, top stitch at $\frac{1}{8}$ th of an inch on the 3 sides and then baste across the top edge near to the edge.
11. Draw a chalk line $1\frac{3}{4}$ inches down from the top edge of the right side of the back panel. Place the flap right side down with the basted edge lined up and centred on the chalk line. Sew at $\frac{1}{8}$ th inch from the edge, backstitching at both ends.

12. Fold the flap up so that it is right side up and then sew a top stitch line at $\frac{1}{4}$ inch from the folded edge and then again at $\frac{1}{2}$ inch from the edge making sure to back stitch at both ends.
13. Baste strap connectors to the right side of the outer side panels. The raw edge of the connectors will be lined up and centred with the top edge of the panel. And the D ring will be pointing towards the bottom edge of the panel. Sew within the seam allowance.
14. Sew binding to the top edge of the vinyl pocket by sliding the top of the vinyl into the folded bias tape right up to the fold. Clip in place and then sew using a topstitch length about $\frac{3}{8}$ th away from the top edge through all the layers.
15. Sew the pocket to the lining front panel $\frac{3}{4}$ inch up from the bottom edge and at the sides using a longer stitch, I use 4mm, within the seam allowance. Use a Teflon foot if you have one. If you don't have a Teflon foot then stick washi tape where you want to sew, sew over it and then tear it off afterwards.
16. If you want to split the pocket choose where you want to put the stitch line and sew using 3.4 or 4mm stitch. Sew from the bottom to the top making sure to backstitch at each end.
17. Slip Pocket. Using both panels of slip pocket place them right sides together with directional fabric facing upwards towards the top and sew along the top and bottom edge both at $\frac{1}{4}$ inch seam allowance. Turn right sides out and press. Top stitch along the top edge.
18. Sew the pocket onto the lining back panel $\frac{3}{4}$ inch up from the bottom edge. Sew within the seam allowance and across the bottom.
19. Sew side outer panels to the front panel. Place one of the side panels and the front panel right sides together lining up your centre marks and starting and stopping $\frac{1}{2}$ inch from the top and bottom sew together remembering to backstitch at the start and finish.
20. Repeat with the other side panel.
21. Sew the back outer panel to the side panels as before.
22. Pin in the bottom panel long sides lining up the centre marks. Sew these two edges together $\frac{1}{2}$ inch in from both ends as before. ITS EASIER TO SEW THE BOTTOM PANEL IN WITH THE OUTER PANELS AGAINST THE BED OF YOUR MACHINE. Turn the bag through to the right way out and press the seams to square off the bag.
23. Repeat with the shorter edges of the bottom panel.
24. Assemble the lining the same way but leave a large turning gap on one of the bottom panel long edges. Leave the lining inside out.
25. Push the outer bag into the lining making sure the flap and the strap connectors are tucked in between the layers.
26. Pin all the way around the top matching up the seams and centre marks, pushing the outer seams in towards the side panels and the lining seams out towards the front and back panels, nesting the seams and pinning in place.
27. Sew around at $\frac{1}{2}$ inch, sewing a second time around to straighten up if necessary.
28. Trim the seam allowance except over the strap connectors.
29. Turn the bag through the turning gap. Its easier to the flap through first.
30. Press the opening in the lining and sew shut.
31. Top stitch around the top edge at $\frac{1}{4}$ inch using 3.4 or 4mm top stitch length. Start and stop in a seam leaving long tails which you can then tie off and trim when finished.
32. Give your bag a final press and then clip on your wrist strap and you are finished.

